

Strategic Regional Policy Plan

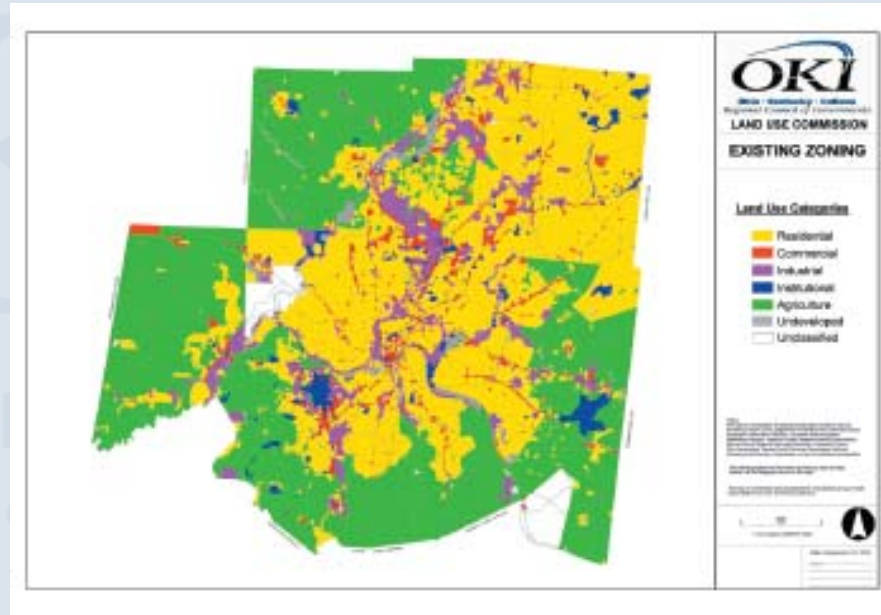
- Transportation
- Public Facilities & Service
- Natural Systems
- Land Use
- Economic Development
- Housing



Key Recommendations

Comprehensive Planning at the Local Level

- **Public Participation**
- **Transportation**
- **Housing**
- **Public Facilities and Services**
- **Natural Systems**
- **Economic Development**
- **Intergovernmental Coordination**
- **Capital Improvements**
- **Future Land Use**



SRPP Implementation

- Rating Factors in the TIP Process tied to SRPP Implementation at the local level
- *Elements of an Effective Local Comprehensive Plan*
- Sample Ordinances & Policy Recommendations
- OKI's Fiscal Impact Analysis Model



HUD-EPA-DOT Partnership

- Sustainable Communities Planning Grant Program
 - \$2.5 million application submitted to update and expand the SRPP
 - Revise regional trends & issues
 - Creation of Regional Consortium & Partners
 - Additional elements of Energy, Climate Change & Disaster Mitigation, Public Health (food systems)
 - Performance Metrics

